

# MONTHLY MEMBERSHIP PROGRESS REPORT

LOCATION CALIFORNIA

District 4 C1

Results as of: 1/31/2022

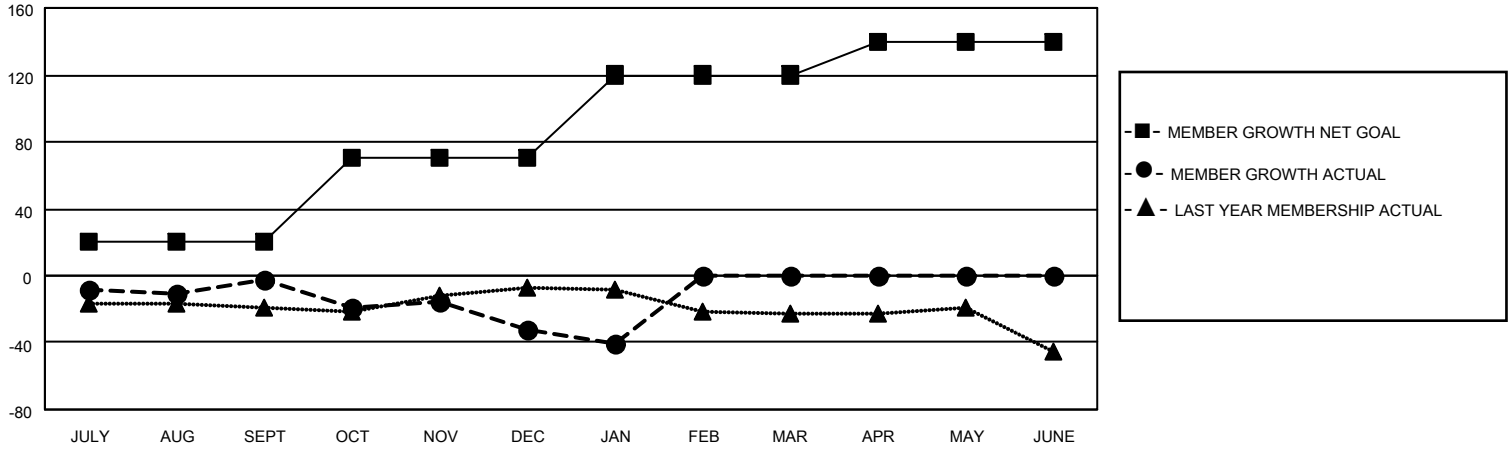
Clubs			
RESULTS FOR 2021-2022			
QUARTER	NEW CLUB GOAL	NEW CLUBS	DROPPED CLUBS
JULY/AUG/SEPT	1	0	2
OCT/NOV/DEC	1	0	3
JAN/FEB/MAR	1	0	0
APR/MAY/JUNE	1	0	0

Members			
RESULTS FOR 2021-2022			
QUARTER	MEMBER GROWTH NET GOAL	MEMBER GROWTH ACTUAL	DROPPED MEMBERS ACTUAL (including transfers)
JULY/AUG/SEPT	20	56	51
OCT/NOV/DEC	50	28	52
JAN/FEB/MAR	50	12	20
APR/MAY/JUNE	20	0	0

**GOALS AND ACTUAL NEW CLUBS CUMULATIVE**



**GOALS AND ACTUAL MEMBERS CUMULATIVE**



**DROPPED CLUBS: 5**

**22 CLUBS OF 42 ADDED 1 OR MORE NEW MEMBERS**

**GENDER DISTRIBUTION**

MALE	592 (64.14%)
FEMALE	331 (35.86%)
NON BINARY	0 (0.00%)
PREFER NOT TO ANSWER	0 (0.00%)

**DROPPED MEMBERS**

[CLICK HERE FOR CUMULATIVE MEMBERSHIP DATA](#)

DECEASED	8
CLUB CANCELLED	9
OTHER	106
<b>TOTAL</b>	<b>123</b>

TOTAL FAMILY UNIT MEMBERS 187

FAMILY MEMBERS PAYING HALF DUES 95